

# Mini Excavator

*Safety, flexible, low consumption and pollution.  
Excellent ability to work in narrow spaces, and easy to transport.*



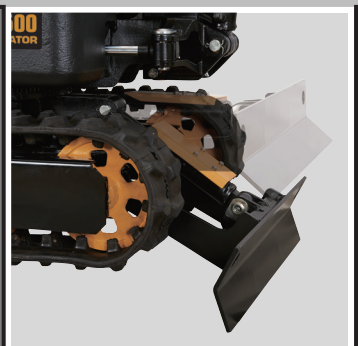
*Digging side ditches next to walls*



*Easy switch from boom swing to upper structure swing.*



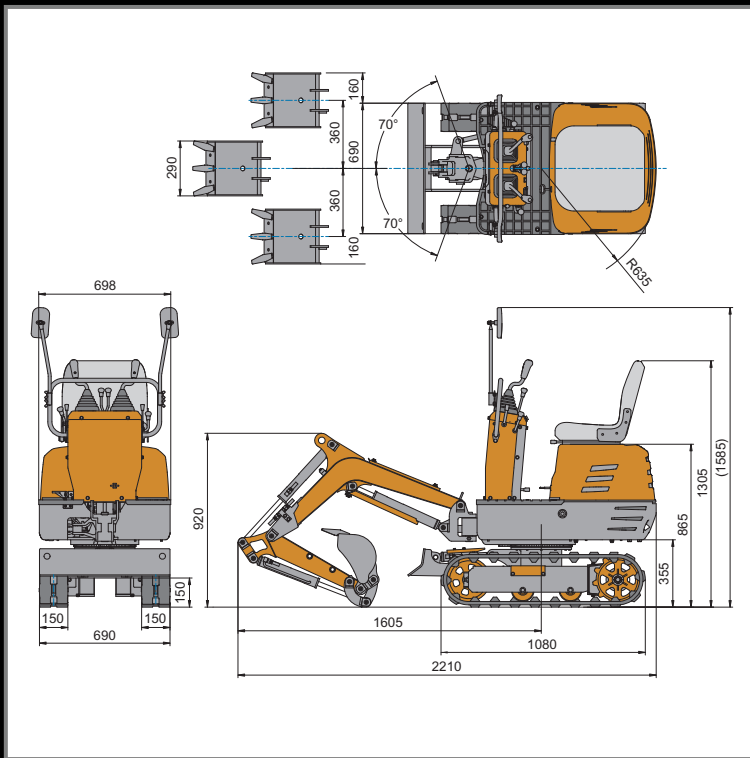
*Foldable pedal*



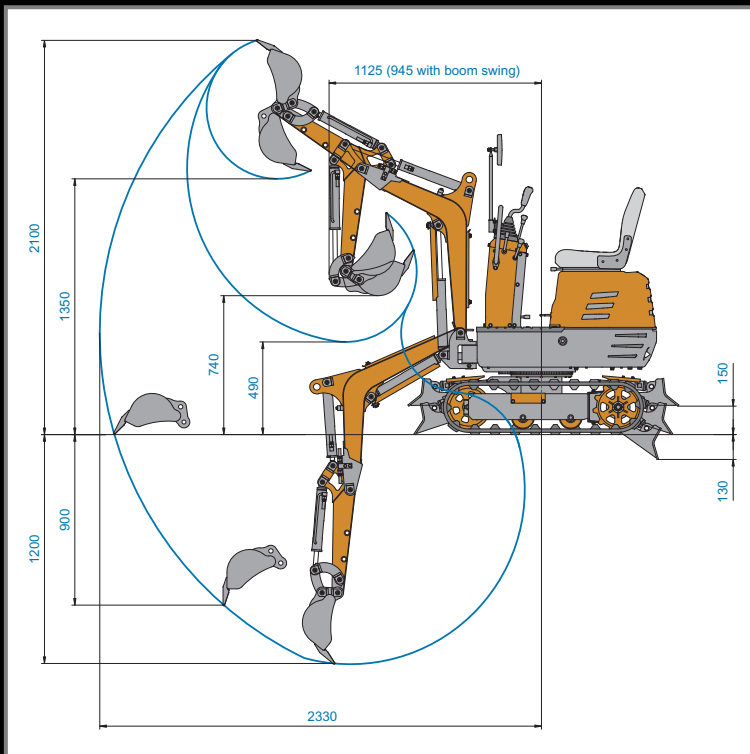
*Shielded hydraulic cylinder*

# Mini Excavator

## Digging Envelope Diagram



**Dimension, mm**



**Working Range, mm**



## BT500

Operating Weight	562 kg
Bucket Capacity	0.011 m <sup>3</sup>
Bucket Width	290 mm
Digging Force (Arm)	4.75 kN (485 kgf)
Digging Force (Bucket)	8 kN (815 kgf)
Engine	306cc, Gas
Starting	Key-type Starter Switch and Shutdown
Travel Speed	1.7 km/h
Traction Force	4.36 kN
Swing Speed	9.3 rpm
Gradeability	15°
Ground Contact Pressure	26.3 kPa (0.27 kgf/cm <sup>2</sup> )
Boom Swing	Left 70° / Right 70°
Track Shoe Type	Rubber Crawler
Track Shoe Width	150 mm
Pump Capacity	2 x 9 L/min
Hydraulic Reservoir	12 L
Parking Brake	Hydraulic Lock Type



## Optional Accessories

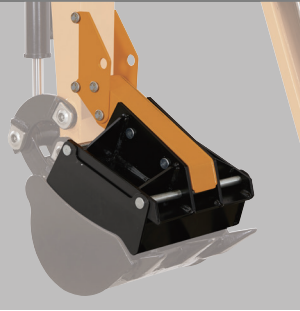
**Thumb**



**31310**

37.6 × 11.9 × 24.4 cm

**Claw**



**31312**

38.9 × 30.4 × 33.7 cm

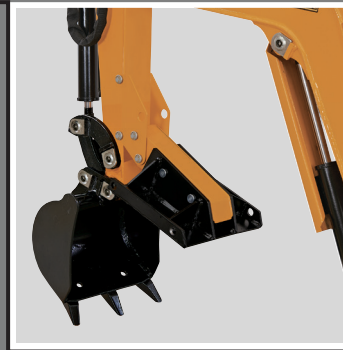
*Thumb #31310 included*

**Grading Bucket**

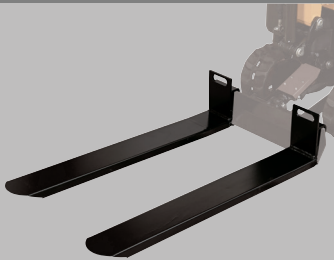


**31308**

48.8 × 50.0 × 22.6 cm



**Pallet Forks**



**31315**

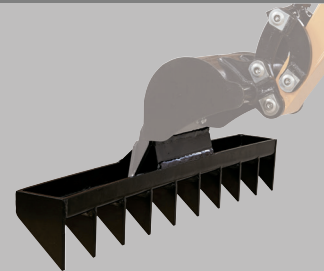
123 × 69 × 25.2 cm

**Canopy**



**31305**

**Rake**



**32180**

100 × 26.3 × 12 cm

